



# FUTUREPROOF INNOVATIVE ANTENNAS

## INDUSTRY GUIDE

### Full Antenna Range

A summarised technical overview for various antennas in our range

# COMPANY OVERVIEW

# POYNTING

## THE COMPANY

Poynting Antennas designs, manufactures and sells cellular antenna products and related equipment mainly to the telecommunications, broadcasting and related industries.

Established in 1990, Poynting has grown to become one of the leading antenna manufacturers in South Africa.

Poynting exists for advancing antenna applications: its name is derived from the Poynting vector, a directional measure of energy in an electromagnetic field.

Poynting was founded on the deep knowledge and understanding of the principles of electromagnetics, RF propagation, antenna design and development.

Poynting employees include graduate as well as professionally registered engineers with PhD doctorate level expert knowledge of the technology and the industry. Poynting has a legacy of innovative design and delivery with customers and partners worldwide.

## FOOTPRINT

Apart from South Africa, roughly 80% of total sales are International with the main markets being Europe, USA, Canada and Australia. International sales are fulfilled through long-standing distribution partners.

## COMMITMENT TO QUALITY

Poynting Antennas (Pty) Ltd is dedicated to ensure that its products and services fully meet the requirements of its customers at all times.

Poynting has a legacy of innovation, design and fulfilment, taking pride in its solid ethical approach. Innovation and creative independence, team spirit and continual learning ensures the organisation can respond to challenges with agility.

## INNOVATION

Poynting holds extensive Intellectual Property (IP) with over 50 registered designs, patents and trademarks filed to differentiate our products from competitive offerings.

Poynting R&D is constantly on the edge of novel innovation.

## OPERATIONS

With production facilities in Samrand, South Africa (for specialised and unique products), Poynting has established satellite manufacturing facilities in Shenzhen China (90% of all antenna productions) with strict quality and manufacturing metrics to ensure the integrity of product performance. International logistics and high volume supply are further streamlined from Shenzhen, China.

## INTERNATIONAL SALES AND BUSINESS DEVELOPMENT

Poynting has embarked on a long term strategy to expand its reach into the international arena. Poynting opened its office with full representation in Germany focusing on deepening the approach in Europe, Scandinavia and Eastern Europe.

In April 2021 we opened offices and a warehouse in the USA and with this expansion Poynting will be able to accelerate our growth and take on the huge demand for broadband antennas in the region.

Poynting is continuously improving – a careful and selective approach for growth in new markets and regions. We seek to promote our products and solutions worldwide and therefore seek distributors in regions where our market share is still small. Servicing new customers better, expanding the business in “undiscovered” regions with new and exciting products.

## POYNTING - BEYOND A CONNECTED LIFE

# CONTENTS PAGE

*Alphabetically & Numerically listed*

POYNTING

- 4 DASH-1; DASH-3; DIPL-1; EPNT-1; EPNT-2; EPNT-4
- 5 HELI-3; HELI-3-IS; HELI-4; HELI-4-IS; HELI-5; HELI-6
- 6 HELI-8; HELI-8-IS; HELI-11; HELI-12; HELI-13; HELI-17
- 7 HELI-18; HELI-19; HELI-21; HELI-22; HELI-3; HELI-41
- 8 HELI-42; LPDA-92; LPDA-500; MIMO-3; MIMO-4
- 9 OMNI-85-V3; OMNI-121; OMNI-280; OMNI-291;  
OMNI-292; OMNI-293
- 10 OMNI-296; OMNI-296-V2; OMNI-297; OMNI-400;  
OMNI-402-5G; OMNI-403
- 11 OMNI-404; OMNI-414; OMNI-493; OMNI-494; OMNI-496;  
OMNI-496-V2
- 12 OMNI-498; OMNI-300; OMNI-510; OMNI-600-5G; OMNI-702;  
OMNI-703
- 13 OMNI-704; OMNI-705; OMNI-706; OMNI-707; OMNI-902;  
OMNI-904
- 14 OMNI-914; PATCH-25; PATCH-26; PUCK-1; PUCK-2;  
PUCK-4
- 15 PUCK-5; PUCK-7; PUCK-8; PUCK-12; SPLT-16; WLAN-60
- 16 WLAN-61; XPOL-1-5G; XPOL-2-5G; XPOL-6; XPOL-16;  
XPOL-24
- 17 WAVEHUNTER; RIPPLE; DPLX-2

## DASH-1



**Primary Industry:** IoT, M2M & Smart Meters; Farming & Agricultural  
**Secondary Industry:** Commercial & Industrial; Urban & Rural; Mining & Tunnelling

|                           |                                   |
|---------------------------|-----------------------------------|
| <b>Frequency:</b>         | 698-960; 1710-2170; 2300-2700 MHz |
| <b>Max Gain:</b>          | 4dBi                              |
| <b>Radiation Pattern:</b> | Omni-Directional                  |
| <b>MIMO:</b>              | SISO                              |
| <b>Size (LxWxD):</b>      | 258mm x 34mm x 13mm               |

## DASH-3



**Primary Industry:** IoT, M2M & Smart Meters; Farming & Agricultural  
**Secondary Industry:** Commercial & Industrial; Urban & Rural; Mining & Tunnelling

|                           |                     |
|---------------------------|---------------------|
| <b>Frequency:</b>         | 400-510 MHz         |
| <b>Max Gain:</b>          | 1dBi                |
| <b>Radiation Pattern:</b> | Omni-Directional    |
| <b>MIMO:</b>              | SISO                |
| <b>Size (LxWxD):</b>      | 258mm x 34mm x 13mm |

## DIPL-1



**Primary Industry:** IoT, M2M & Smart Meters; Farming & Agricultural  
**Secondary Industry:** Commercial & Industrial; Urban & Rural; Mining & Tunnelling

|                           |                        |
|---------------------------|------------------------|
| <b>Frequency:</b>         | 824-960; 1710-2200 MHz |
| <b>Max Gain:</b>          | 1dBi                   |
| <b>Radiation Pattern:</b> | Omni-Directional       |
| <b>MIMO:</b>              | SISO                   |
| <b>Size (LxWxD):</b>      | 160mm x 26mm x 10mm    |

## EPNT-1



**Primary Industry:** Urban; Commercial & Industrial

|                               |                                  |
|-------------------------------|----------------------------------|
| <b>Frequency:</b>             | 617 – 960; 1710 – 3800 MHz       |
| <b>Max Gain:</b>              | 4.5dBi                           |
| <b>Radiation Pattern:</b>     | Omni-Directional                 |
| <b>MIMO:</b>                  | 4X4 LTE (MIMO); 2X2 Wi-Fi (MIMO) |
| <b>Size (LxWxD):</b>          | 260mm x 264mm x 168mm            |
| <b>Router Space: (LxWxD):</b> | 185mm x 145mm x 45mm             |

## EPNT-2



**Primary Industry:** Rural; Urban; Farming & Agricultural; Commercial & Industrial

|                               |                                  |
|-------------------------------|----------------------------------|
| <b>Frequency:</b>             | 617 – 960; 1710 – 3800 MHz       |
| <b>Max Gain:</b>              | 11dBi                            |
| <b>Radiation Pattern:</b>     | Uni & Omni-Directional           |
| <b>MIMO:</b>                  | 4X4 LTE (MIMO); 2X2 Wi-Fi (MIMO) |
| <b>Size (LxWxD):</b>          | 260mm x 264mm x 168mm            |
| <b>Router Space: (LxWxD):</b> | 185mm x 145mm x 45mm             |

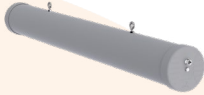
## EPNT-4



**Primary Industry:** Urban & Rural; Farming & Agricultural; Commercial & Industrial; Marine & Coastal  
**Secondary Industry:** Transport & Mobility

|                               |  |
|-------------------------------|--|
| <b>Frequency:</b>             | 617-960; 1427-1517; 1710 -2700; 3400-3800 MHz (Band 71- US Specific) |
| <b>Max Gain:</b>              | 3dBi   |
| <b>Radiation Pattern:</b>     | Omni-Directional   |
| <b>MIMO:</b>                  | 4X4 LTE (MIMO); 4X4 Wi-Fi (MIMO)                                     |
| <b>Size (LxWxD):</b>          | 351mm x 238mm x 182mm  |
| <b>Router Space: (LxWxD):</b> | 120 mm x 120 mm x 55 mm  |

## HELI-3



**Primary Industry:** Mining & Tunnelling

|                           |                        |
|---------------------------|------------------------|
| <b>Frequency:</b>         | 2400-2500 MHz          |
| <b>Max Gain:</b>          | 17.5dBi                |
| <b>Radiation Pattern:</b> | Uni-Directional        |
| <b>MIMO:</b>              | SISO                   |
| <b>Size (LxWxD):</b>      | 1040mm x 145mm x 120mm |

## HELI-3-IS



**Primary Industry:** Mining & Tunnelling

|                           |                        |
|---------------------------|------------------------|
| <b>Frequency:</b>         | 2400-2500 MHz          |
| <b>Max Gain:</b>          | 17.5dBi                |
| <b>Radiation Pattern:</b> | Uni-Directional        |
| <b>MIMO:</b>              | SISO                   |
| <b>Size (LxWxD):</b>      | 1040mm x 145mm x 120mm |

**Intrinsically Safe** - The antenna is constructed with a special coating to prevent sparks of any kind, that could result in causing a fire.

## HELI-4



**Primary Industry:** Mining & Tunnelling

|                           |                       |
|---------------------------|-----------------------|
| <b>Frequency:</b>         | 2400-2500 MHz         |
| <b>Max Gain:</b>          | 14.5dBi               |
| <b>Radiation Pattern:</b> | Uni-Directional       |
| <b>MIMO:</b>              | SISO                  |
| <b>Size (LxWxD):</b>      | 420mm x 145mm x 120mm |

## HELI-4-IS

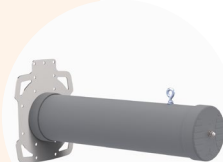


**Primary Industry:** Mining & Tunnelling

|                           |                       |
|---------------------------|-----------------------|
| <b>Frequency:</b>         | 2400-2500 MHz         |
| <b>Max Gain:</b>          | 14.5dBi               |
| <b>Radiation Pattern:</b> | Uni-Directional       |
| <b>MIMO:</b>              | SISO                  |
| <b>Size (LxWxD):</b>      | 420mm x 145mm x 120mm |

**Intrinsically Safe** - The antenna is constructed with a special coating to prevent sparks of any kind, that could result in causing a fire.

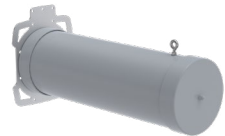
## HELI-5



**Primary Industry:** Mining & Tunnelling

|                           |                       |
|---------------------------|-----------------------|
| <b>Frequency:</b>         | 1710-2170 MHz         |
| <b>Max Gain:</b>          | 16dBi                 |
| <b>Radiation Pattern:</b> | Uni-Directional       |
| <b>MIMO:</b>              | SISO                  |
| <b>Size (LxWxD):</b>      | 514mm x 245mm x 197mm |

## HELI-6



**Primary Industry:** Mining & Tunnelling

|                           |                       |
|---------------------------|-----------------------|
| <b>Frequency:</b>         | 698-960 MHz           |
| <b>Max Gain:</b>          | 13.5dBi               |
| <b>Radiation Pattern:</b> | Uni-Directional       |
| <b>MIMO:</b>              | SISO                  |
| <b>Size (LxWxD):</b>      | 750mm x 250mm x 210mm |

## HELI-8



**Primary Industry:** Mining & Tunnelling

|                           |                        |
|---------------------------|------------------------|
| <b>Frequency:</b>         | 2400-2500 MHz          |
| <b>Max Gain:</b>          | 14.5dBi                |
| <b>Radiation Pattern:</b> | Bi-Directional         |
| <b>MIMO:</b>              | SISO                   |
| <b>Size (LxWxD):</b>      | 2004mm x 142mm x 116mm |

## HELI-8-IS



**Primary Industry:** Mining & Tunnelling

|                           |                        |
|---------------------------|------------------------|
| <b>Frequency:</b>         | 2400-2500 MHz          |
| <b>Max Gain:</b>          | 14.5dBi                |
| <b>Radiation Pattern:</b> | Bi-Directional         |
| <b>MIMO:</b>              | SISO                   |
| <b>Size (LxWxD):</b>      | 2004mm x 142mm x 116mm |

**Intrinsically Safe** - The antenna is constructed with a special coating to prevent sparks of any kind, that could result in causing a fire.

## HELI-11



**Primary Industry:** Mining & Tunnelling

|                           |   |
|---------------------------|---|
| <b>Frequency:</b>         | 2400-2500 MHz                                       |
| <b>Max Gain:</b>          | 12dBi   |
| <b>Radiation Pattern:</b> | Uni-Directional                                     |
| <b>MIMO:</b>              | SISO or 2X2 MIMO (possible with RHC & LHC combined) |
| <b>Size (LxWxD):</b>      | 325mm x 145mm x 115mm                               |

## HELI-12



**Primary Industry:** Mining & Tunnelling

|                           |   |
|---------------------------|---|
| <b>Frequency:</b>         | 5000-6000 MHz                                       |
| <b>Max Gain:</b>          | 13dBi   |
| <b>Radiation Pattern:</b> | Uni-Directional                                     |
| <b>MIMO:</b>              | SISO or 2X2 MIMO (possible with RHC & LHC combined) |
| <b>Size (LxWxD):</b>      | 321mm x 142mm x 114mm                               |

## HELI-13



**Primary Industry:** Mining & Tunnelling

|                           |   |
|---------------------------|---|
| <b>Frequency:</b>         | 2400-2500; 5000-6000 MHz                            |
| <b>Max Gain:</b>          | 13dBi   |
| <b>Radiation Pattern:</b> | Uni-Directional                                     |
| <b>MIMO:</b>              | SISO or 2X2 MIMO (possible with RHC & LHC combined) |
| <b>Size (LxWxD):</b>      | 321mm x 142mm x 114mm                               |

## HELI-17



**Primary Industry:** Mining & Tunnelling

|                           |   |
|---------------------------|---|
| <b>Frequency:</b>         | 2400-2500 MHz                                       |
| <b>Max Gain:</b>          | 9dBi  |
| <b>Radiation Pattern:</b> | Bi-Directional                                      |
| <b>MIMO:</b>              | SISO or 2X2 MIMO (possible with RHC & LHC combined) |
| <b>Size (LxWxD):</b>      | 632mm x 142mm x 114mm                               |

## HELI-18



**Primary Industry:** Mining & Tunnelling

|                           |   |
|---------------------------|---|
| <b>Frequency:</b>         | 5000-6000 MHz                                       |
| <b>Max Gain:</b>          | 11dBi   |
| <b>Radiation Pattern:</b> | Bi-Directional                                      |
| <b>MIMO:</b>              | SISO or 2X2 MIMO (possible with RHC & LHC combined) |
| <b>Size (LxWxD):</b>      | 632mm x 142mm x 114mm                               |

## HELI-19



**Primary Industry:** Mining & Tunnelling

|                           |   |
|---------------------------|---|
| <b>Frequency:</b>         | 2400-2500; 5000-6000 MHz                            |
| <b>Max Gain:</b>          | 11dBi   |
| <b>Radiation Pattern:</b> | Bi-Directional                                      |
| <b>MIMO:</b>              | SISO or 2X2 MIMO (possible with RHC & LHC combined) |
| <b>Size (LxWxD):</b>      | 626mm x 143mm x 114mm                               |

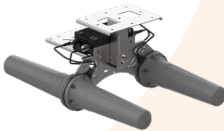
## HELI-21



**Primary Industry:** Mining & Tunnelling

|                           |                          |
|---------------------------|--------------------------|
| <b>Frequency:</b>         | 2400-2500; 5000-6000 MHz |
| <b>Max Gain:</b>          | 13dBi                    |
| <b>Radiation Pattern:</b> | Uni-Directional          |
| <b>MIMO:</b>              | 2X2 MIMO                 |
| <b>Size (LxWxD):</b>      | 526mm x 415mm x 266mm    |

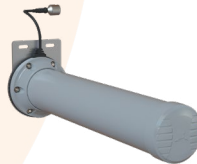
## HELI-22



**Primary Industry:** Mining & Tunnelling

|                           |                          |
|---------------------------|--------------------------|
| <b>Frequency:</b>         | 2400-2500; 5000-6000 MHz |
| <b>Max Gain:</b>          | 11dBi                    |
| <b>Radiation Pattern:</b> | Bi-Directional           |
| <b>MIMO:</b>              | 2X2 MIMO                 |
| <b>Size (LxWxD):</b>      | 603mm x 415mm x 266mm    |

## HELI-31



**Primary Industry:** Mining & Tunnelling

|                           |  |
|---------------------------|--|
| <b>Frequency:</b>         | 1700-7200 MHz                                |
| <b>Max Gain:</b>          | 9.5dBi                                       |
| <b>Radiation Pattern:</b> | Uni-Directional                              |
| <b>MIMO:</b>              | SISO, 2X2 (possible with RHC & LHC combined) |
| <b>Size (LxWxD):</b>      | 411mm x 142mm x 114mm                        |

## HELI-41



**Primary Industry:** Mining & Tunnelling

|                           |   |
|---------------------------|---|
| <b>Frequency:</b>         | 2400-2500 MHz; 5000-6000 MHz              |
| <b>Max Gain:</b>          | 2.4 GHz 12dBi; 5 GHz 13dBi                |
| <b>Radiation Pattern:</b> | Uni-Directional                           |
| <b>MIMO:</b>              | 4x4 MIMO Possible with RHC & LHC combined |
| <b>Size (LxWxD):</b>      | 575 mm x 677 mm x 327 mm                  |

## HELI-42



**Primary Industry:** Mining & Tunnelling

|                           |   |
|---------------------------|---|
| <b>Frequency:</b>         | 2400-2500 MHz; 5000-6000 MHz              |
| <b>Max Gain:</b>          | 2.4 GHz 10dBi; 5 GHz 11.5dBi              |
| <b>Radiation Pattern:</b> | Bi-Directional                            |
| <b>MIMO:</b>              | 4x4 MIMO Possible with RHC & LHC combined |
| <b>Size (LxWxD):</b>      | 570 mm x 680 mm x 289 mm                  |

## LPDA-92

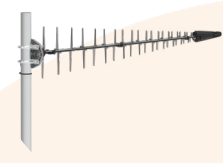


**Primary Industry:** Commercial & Industrial; Urban & Rural; Farming & Agricultural

**Secondary Industry:** Mining & Tunnelling; IoT, M2M & Smart Meters

|                           |                                   |
|---------------------------|-----------------------------------|
| <b>Frequency:</b>         | 698-960; 1710-2700; 3400-3800 MHz |
| <b>Max Gain:</b>          | 11dBi                             |
| <b>Radiation Pattern:</b> | Uni-Directional                   |
| <b>MIMO:</b>              | SISO                              |
| <b>Size (LxWxD):</b>      | 1112mm x 200mm x 47mm             |

## LPDA-500



**Primary Industry:** Urban & Rural; Farming & Agricultural;

**Secondary Industry:** Commercial & Industrial

|                           |                        |
|---------------------------|------------------------|
| <b>Frequency:</b>         | 617-7200 MHz           |
| <b>Max Gain:</b>          | 11.5dBi                |
| <b>Radiation Pattern:</b> | Uni-Directional        |
| <b>MIMO:</b>              | SISO                   |
| <b>Size (LxWxD):</b>      | 1382mm x 250mm x 142mm |

## MIMO-3



Available in Black



**Primary Industry:** Transport & Mobility; Marine & Coastal; Farming & Agricultural

**Secondary Industry:** Mining & Tunnelling; IoT, M2M & Smart Meters

|                           |   |
|---------------------------|---|
| <b>Frequency:</b>         | MIMO-3-15; 410-470; 698-960; 1710-2700; 3400-3800 MHz; MIMO-3-17; 5000-6000 MHz |
| <b>Max Gain:</b>          | 6dBi  |
| <b>Radiation Pattern:</b> | Omni-Directional  |
| <b>MIMO:</b>              | 2X2 MIMO; 4X4 MIMO  |
| <b>Size (LxWxD):</b>      | 253mm x 144mm x 128mm   |

## MIMO-3



Available in Black



**Primary Industry:** Transport & Mobility; Marine & Coastal; Farming & Agricultural

**Secondary Industry:** Mining & Tunnelling; IoT, M2M & Smart Meters

|                           |  |
|---------------------------|--|
| <b>Frequency:</b>         | Cellular: 410 – 3800 MHz; Wi-Fi: 2400 – 7200 MHz; GPS/ Glonass |
| <b>Max Gain:</b>          | 6dBi   |
| <b>Radiation Pattern:</b> | Omni-Directional   |
| <b>MIMO:</b>              | 2X2 MIMO; 4X4 MIMO   |
| <b>Size (LxWxD):</b>      | 253mm x 144mm x 128mm  |

## MIMO-4



Available in Black



**Primary Industry:** Transport & Mobility; Marine & Coastal; Farming & Agricultural

**Secondary Industry:** Mining & Tunnelling; IoT, M2M & Smart Meters

|                           |  |
|---------------------------|--|
| <b>Frequency:</b>         | Cellular: 617 – 6000 MHz; Wi-Fi: 2400 – 7200 MHz; GPS/ Glonass |
| <b>Max Gain:</b>          | 6dBi   |
| <b>Radiation Pattern:</b> | Omni-Directional   |
| <b>MIMO:</b>              | 2X2 MIMO; 4X4 MIMO   |
| <b>Size (LxWxD):</b>      | Ø160 mm x 65 mm  |



## OMNI-85-V3



**Primary Industry:** Urban & Rural; IoT, M2M & Smart Meters; Farming & Agricultural

**Secondary Industry:** Commercial & Industrial

|                           |   |
|---------------------------|---|
| <b>Frequency:</b>         | 617-960; 698-960; 1710-2700; 3400 - 3800 MHz (Band 71- US Specific) |
| <b>Max Gain:</b>          | 4dBi  |
| <b>Radiation Pattern:</b> | Omni-Directional  |
| <b>MIMO:</b>              | SISO  |
| <b>Size (LxWxD):</b>      | 209mm x 31mm x Ø13mm  |

## OMNI-121



**Primary Industry:** Commercial & Industrial; Urban & Rural; IoT, M2M & Smart Meters; Farming & Agricultural

**Secondary Industry:** Mining & Tunnelling

|                           |                                   |
|---------------------------|-----------------------------------|
| <b>Frequency:</b>         | 698-960; 1710-2170; 2300-2700 MHz |
| <b>Max Gain:</b>          | 6dBi                              |
| <b>Radiation Pattern:</b> | Omni-Directional                  |
| <b>MIMO:</b>              | SISO                              |
| <b>Size (LxWxD):</b>      | 590mm x 80mm x 55mm               |

## OMNI-280



**Primary Industry:** Urban & Rural; IoT, M2M & Smart Meters; Farming & Agricultural

**Secondary Industry:** Commercial & Industrial

|                           |  |
|---------------------------|--|
| <b>Frequency:</b>         | 617-960; 1710-2700; 3400-3800 MHz (Band 71- US Specific) |
| <b>Max Gain:</b>          | 4dBi   |
| <b>Radiation Pattern:</b> | Omni-Directional   |
| <b>MIMO:</b>              | SISO   |
| <b>Size (LxWxD):</b>      | 157mm x 61mm x 44mm                                      |

## OMNI-291



**Primary Industry:** Marine & Coastal

**Secondary Industry:** Commercial & Industrial; Farming & Agricultural

|                           |                                 |
|---------------------------|---------------------------------|
| <b>Frequency:</b>         | 450-470; 698-960; 1710-2700 MHz |
| <b>Max Gain:</b>          | 7dBi                            |
| <b>Radiation Pattern:</b> | Omni-Directional                |
| <b>MIMO:</b>              | SISO                            |
| <b>Size (LxWxD):</b>      | 560mm x Ø75mm (excl. BRKT-40)   |

## OMNI-292



**Primary Industry:** Commercial & Industrial; Urban & Rural; Farming & Agricultural

**Secondary Industry:** Mining & Tunnelling; IoT, M2M & Smart Meters

|                           |  |
|---------------------------|--|
| <b>Frequency:</b>         | 617-960; 1710-2170; 2300-2700 MHz (Band 71- US Specific) |
| <b>Max Gain:</b>          | 8dBi   |
| <b>Radiation Pattern:</b> | Omni-Directional   |
| <b>MIMO:</b>              | SISO   |
| <b>Size (LxWxD):</b>      | 646mm x Ø71mm  |

## OMNI-293



**Primary Industry:** Commercial & Industrial; Urban & Rural; Farming & Agricultural

**Secondary Industry:** Mining & Tunnelling; IoT, M2M & Smart Meters

|                           |   |
|---------------------------|---|
| <b>Frequency:</b>         | 617-960; 1427-1517; 1710-2700; 3400-3800 MHz (Band 71- US Specific) |
| <b>Max Gain:</b>          | 9dBi  |
| <b>Radiation Pattern:</b> | Omni-Directional  |
| <b>MIMO:</b>              | SISO  |
| <b>Size (LxWxD):</b>      | 635mm x Ø 71mm  |

## OMNI-296



**Primary Industry:** Commercial & Industrial; Farming & Agricultural  
**Secondary Industry:** Urban & Rural; Mining & Tunnelling; IoT, M2M & Smart Meters

|                    |                                     |
|--------------------|-------------------------------------|
| Frequency:         | 2400-2500; 3300-3800; 5000-6000 MHz |
| Max Gain:          | 7.5dBi                              |
| Radiation Pattern: | Omnii-Directional                   |
| MIMO:              | SISO                                |
| Size (LxWxD):      | 485mm x Ø71mm                       |

## OMNI-296-V2



**Primary Industry:** Commercial & Industrial; Farming & Agricultural  
**Secondary Industry:** Urban & Rural; Mining & Tunnelling; IoT, M2M & Smart Meters

|                    |                                    |
|--------------------|------------------------------------|
| Frequency:         | 2400-250; 3300-4200; 4900-7200 MHz |
| Max Gain:          | 10dBi                              |
| Radiation Pattern: | Omnii-Directional                  |
| MIMO:              | SISO                               |
| Size (LxWxD):      | 485mm x Ø71mm                      |

## OMNI-297



**Primary Industry:** Commercial & Industrial; Mining & Tunnelling; IoT, M2M & Smart Meters; Farming & Agricultural

|                    |   |
|--------------------|---|
| Frequency:         | 617-960; 698 - 3800 MHz (Band 71 - US Specific) |
| Max Gain:          | 2dBi  |
| Radiation Pattern: | Omnii-Directional                               |
| MIMO:              | SISO  |
| Size (LxWxD):      | 150mm x Ø70mm                                   |

## OMNI-300



**Primary Industry:** IoT, M2M & Smart Meters; Commercial & Industrial; Urban & Rural  
**Secondary Industry:** Farming & Agricultural

|                    |                   |
|--------------------|-------------------|
| Frequency:         | 868 - 930 MHz     |
| Max Gain:          | 4.5dBi            |
| Radiation Pattern: | Omnii-Directional |
| MIMO:              | SISO              |
| Size (LxWxD):      | 553mm x Ø50mm     |

## OMNI-400



**Primary Industry:** Marine & Coastal  
**Secondary Industry:** Commercial & Industrial; IoT, M2M & Smart Meters; Farming & Agricultural

|                    |   |
|--------------------|---|
| Frequency:         | 617-960; 1710-2170; 2300-2700 MHz (Band 71 - US Specific) |
| Max Gain:          | 7.5dBi  |
| Radiation Pattern: | Omnii-Directional   |
| MIMO:              | SISO  |
| Size (LxWxD):      | 555mm x Ø75mm (excl. BRKT-40)                             |

## OMNI-402-5G



**Primary Industry:** Marine & Coastal  
**Secondary Industry:** Commercial & Industrial; IoT, M2M & Smart Meters; Farming & Agricultural

|                    |                               |
|--------------------|-------------------------------|
| Frequency:         | 410-4200 MHz                  |
| Max Gain:          | 5.8dBi                        |
| Radiation Pattern: | Omnii-Directional             |
| MIMO:              | 2X2 MIMO                      |
| Size (LxWxD):      | 750mm x Ø75mm (excl. BRKT-40) |

## OMNI-403



**Primary Industry:** Marine & Coastal  
**Secondary Industry:** Commercial & Industrial; IoT, M2M & Smart Meters; Farming & Agricultural

|                           |  |
|---------------------------|--|
| <b>Frequency:</b>         | 617-960; 1710-2170; 2300-2700 MHz (Band 71- US Specific) |
| <b>Max Gain:</b>          | 5dBi   |
| <b>Radiation Pattern:</b> | Omni-Directional   |
| <b>MIMO:</b>              | SISO   |
| <b>Size (LxWxD):</b>      | 252mm x Ø75mm (excl. BRKT-40)                            |

## OMNI-493



**Primary Industry:** Marine & Coastal  
**Secondary Industry:** Commercial & Industrial; IoT, M2M & Smart Meters; Farming & Agricultural

|                           |   |
|---------------------------|---|
| <b>Frequency:</b>         | 617-960; 1427-1517; 1710 -2700; 3400-3800 MHz |
| <b>Max Gain:</b>          | 9dBi  |
| <b>Radiation Pattern:</b> | Omni-Directional                              |
| <b>MIMO:</b>              | SISO  |
| <b>Size (LxWxD):</b>      | 646 mm x Ø75 mm (excl. BRKT-40)               |

## OMNI-404



**Primary Industry:** Marine & Coastal  
**Secondary Industry:** Commercial & Industrial; IoT, M2M & Smart Meters; Farming & Agricultural

|                           |  |
|---------------------------|--|
| <b>Frequency:</b>         | 617-960; 1710-2700; 3400-3800 MHz (Band 71- US Specific) |
| <b>Max Gain:</b>          | 2dBi   |
| <b>Radiation Pattern:</b> | Omni-Directional   |
| <b>MIMO:</b>              | SISO   |
| <b>Size (LxWxD):</b>      | 252mm x Ø75mm (excl. BRKT-40)                            |

## OMNI-494



**Primary Industry:** Marine & Coastal  
**Secondary Industry:** Commercial & Industrial; IoT, M2M & Smart Meters; Farming & Agricultural

|                           |                                 |
|---------------------------|---------------------------------|
| <b>Frequency:</b>         | 2.4 & 5 -7.2 GHz                |
| <b>Max Gain:</b>          | 9.8dBi                          |
| <b>Radiation Pattern:</b> | Omni-Directional                |
| <b>MIMO:</b>              | 4X4 MIMO                        |
| <b>Size (LxWxD):</b>      | 646 mm x Ø75 mm (excl. BRKT-40) |

## OMNI-414



**Primary Industry:** Marine & Coastal  
**Secondary Industry:** Commercial & Industrial; IoT, M2M & Smart Meters; Farming & Agricultural

|                           |                                       |
|---------------------------|---------------------------------------|
| <b>Frequency:</b>         | 617 - 3800 MHz (Band 71- US Specific) |
| <b>Max Gain:</b>          | 3.5dBi                                |
| <b>Radiation Pattern:</b> | Omni-Directional                      |
| <b>MIMO:</b>              | 4X4 MIMO                              |
| <b>Size (LxWxD):</b>      | 646 mm x Ø75mm (excl. BRKT-40)        |

## OMNI-496



**Primary Industry:** Marine & Coastal  
**Secondary Industry:** Commercial & Industrial; IoT, M2M & Smart Meters; Farming & Agricultural

|                           |                                     |
|---------------------------|-------------------------------------|
| <b>Frequency:</b>         | 2400-2500; 3300-3800; 5000-6000 MHz |
| <b>Max Gain:</b>          | 7.5dBi                              |
| <b>Radiation Pattern:</b> | Omni-Directional                    |
| <b>MIMO:</b>              | SISO                                |
| <b>Size (LxWxD):</b>      | 560mm x Ø75mm (excl. BRKT-40)       |

## OMNI-496-V2



**Primary Industry:** Marine & Coastal

**Secondary Industry:** Commercial & Industrial; IoT, M2M & Smart Meters; Farming & Agricultural

|                           |                                     |
|---------------------------|-------------------------------------|
| <b>Frequency:</b>         | 2400-2500; 3300-4200; 5000-7200 MHz |
| <b>Max Gain:</b>          | 10dBi                               |
| <b>Radiation Pattern:</b> | Omni-Directional                    |
| <b>MIMO:</b>              | SISO                                |
| <b>Size (LxWxD):</b>      | 560mm x Ø75mm (excl. BRKT-40)       |

## OMNI-498



**Primary Industry:** Marine & Coastal

**Secondary Industry:** Commercial & Industrial; IoT, M2M & Smart Meters; Farming & Agricultural

|                           |                                 |
|---------------------------|---------------------------------|
| <b>Frequency:</b>         | 2.4 & 5 -7.2 GHz                |
| <b>Max Gain:</b>          | 9.8dBi                          |
| <b>Radiation Pattern:</b> | Omni-Directional                |
| <b>MIMO:</b>              | 2X2 MIMO                        |
| <b>Size (LxWxD):</b>      | 646 mm x Ø75 mm (excl. BRKT-40) |

## OMNI-510



**Primary Industry:** Transport & Mobility; Marine & Coastal; IoT, M2M & Smart Meters; Farming & Agricultural

**Secondary Industry:** Commercial & Industrial; Urban & Rural; Mining & Tunnelling

|                           |                                   |
|---------------------------|-----------------------------------|
| <b>Frequency:</b>         | 698-960; 1710-2170; 2300-2700 MHz |
| <b>Max Gain:</b>          | 2dBi                              |
| <b>Radiation Pattern:</b> | Omni-Directional                  |
| <b>MIMO:</b>              | SISO                              |
| <b>Size (LxWxD):</b>      | 135mm x 20mm x 10mm               |

## OMNI-600-5G



**Primary Industry:** Commercial & Industrial; Urban & Rural; Farming & Agricultural

**Secondary Industry:** Mining & Tunnelling; IoT, M2M & Smart Meters; Farming & Agricultural

|                           |  |
|---------------------------|--|
| <b>Frequency:</b>         | 410-470; 698-960; 1710-2700; 3400-3800 MHz |
| <b>Max Gain:</b>          | 6dBi                                       |
| <b>Radiation Pattern:</b> | Omni-Directional                           |
| <b>MIMO:</b>              | 2X2 MIMO                                   |
| <b>Size (LxWxD):</b>      | 646mm x Ø71mm                              |

## OMNI-702



**Primary Industry:** Commercial & Industrial; Mining & Tunnelling

**Secondary Industry:** Farming & Agricultural; IoT, M2M & Smart Meters

|                           |                  |
|---------------------------|------------------|
| <b>Frequency:</b>         | 2400 - 2500MHz   |
| <b>Max Gain:</b>          | 9dBi             |
| <b>Radiation Pattern:</b> | Omni-Directional |
| <b>MIMO:</b>              | SISO             |
| <b>Size (LxWxD):</b>      | 307mm x Ø70mm    |

## OMNI-703



**Primary Industry:** Commercial & Industrial; Mining & Tunnelling

**Secondary Industry:** Farming & Agricultural; IoT, M2M & Smart Meters

|                           |                  |
|---------------------------|------------------|
| <b>Frequency:</b>         | 2400-2500 MHz    |
| <b>Max Gain:</b>          | 4Bi              |
| <b>Radiation Pattern:</b> | Omni-Directional |
| <b>MIMO:</b>              | SISO             |
| <b>Size (LxWxD):</b>      | 307mm x Ø70mm    |

## OMNI-704



**Primary Industry:** Commercial & Industrial; Mining & Tunnelling  
**Secondary Industry:** Farming & Agricultural; IoT, M2M & Smart Meters

|                           |                   |
|---------------------------|-------------------|
| <b>Frequency:</b>         | 5000 - 6000 MHz   |
| <b>Max Gain:</b>          | 4dBi              |
| <b>Radiation Pattern:</b> | Omnii-Directional |
| <b>MIMO:</b>              | SISO              |
| <b>Size (LxWxD):</b>      | 155mm x Ø70mm     |

## OMNI-705



**Primary Industry:** Commercial & Industrial; Mining & Tunnelling  
**Secondary Industry:** Farming & Agricultural; IoT, M2M & Smart Meters

|                           |                  |
|---------------------------|------------------|
| <b>Frequency:</b>         | 5000 - 6000 MHz  |
| <b>Max Gain:</b>          | 7dBi             |
| <b>Radiation Pattern:</b> | Omni-Directional |
| <b>MIMO:</b>              | SISO             |
| <b>Size (LxWxD):</b>      | 155mm x Ø70mm    |

## OMNI-706



**Primary Industry:** Commercial & Industrial; Mining & Tunnelling  
**Secondary Industry:** Farming & Agricultural; IoT, M2M & Smart Meters

|                           |                              |
|---------------------------|------------------------------|
| <b>Frequency:</b>         | 2400 - 2500; 5000 - 6000 MHz |
| <b>Max Gain:</b>          | 5.5dBi                       |
| <b>Radiation Pattern:</b> | Omni-Directional             |
| <b>MIMO:</b>              | SISO                         |
| <b>Size (LxWxD):</b>      | 155mm x Ø70mm                |

## OMNI-707



**Primary Industry:** Commercial & Industrial; Urban & Rural; Farming & Agricultural  
**Secondary Industry:** Mining & Tunnelling; IoT, M2M & Smart Meters; Farming & Agricultural

|                           |                              |
|---------------------------|------------------------------|
| <b>Frequency:</b>         | 2400 - 2500; 5000 - 6000 MHz |
| <b>Max Gain:</b>          | 5dBi                         |
| <b>Radiation Pattern:</b> | Omni-Directional             |
| <b>MIMO:</b>              | 2X2 MIMO                     |
| <b>Size (LxWxD):</b>      | 307mm x Ø70mm                |

## OMNI-902



**Primary Industry:** Marine & Coastal

|                           |  |
|---------------------------|--|
| <b>Frequency:</b>         | 617 - 4200 MHz (Band 71 - US Specific) |
| <b>Max Gain:</b>          | 9dBi                                   |
| <b>Radiation Pattern:</b> | Omni-Directional                       |
| <b>MIMO:</b>              | 2x2 MIMO (2 x 5G/LTE)                  |
| <b>Size (LxWxD):</b>      | 1654mm x Ø145mm                        |

## OMNI-904



**Primary Industry:** Marine & Coastal

|                           |  |
|---------------------------|--|
| <b>Frequency:</b>         | 617 - 4200 MHz (Band 71 - US Specific) |
| <b>Max Gain:</b>          | 9dBi                                   |
| <b>Radiation Pattern:</b> | Omni-Directional                       |
| <b>MIMO:</b>              | 2x2 MIMO (2 x 5G/LTE)                  |
| <b>Size (LxWxD):</b>      | 1654mm x Ø145mm                        |

## OMNI-914



**Primary Industry:** Marine & Coastal

|                           |                                       |
|---------------------------|---------------------------------------|
| <b>Frequency:</b>         | 617 – 4200 MHz (Band 71- US Specific) |
| <b>Max Gain:</b>          | 9dBi                                  |
| <b>Radiation Pattern:</b> | Omni-Directional                      |
| <b>MIMO:</b>              | 4x4 MIMO                              |
| <b>Size (LxWxD):</b>      | 2454mm x Ø145mm                       |

## PATCH-25



**Primary Industry:** Commercial & Industrial  
**Secondary Industry:** Mining & Tunnelling; IoT, M2M & Smart Meters

|                           |                      |
|---------------------------|----------------------|
| <b>Frequency:</b>         | 860-960 MHz          |
| <b>Max Gain:</b>          | 8.8dBi               |
| <b>Radiation Pattern:</b> | Uni-Directional      |
| <b>MIMO:</b>              | SISO                 |
| <b>Size (LxWxD):</b>      | 250mm x 250mm x 40mm |

## PATCH-26



**Primary Industry:** Commercial & Industrial  
**Secondary Industry:** Mining & Tunnelling; IoT, M2M & Smart Meters

|                           |                      |
|---------------------------|----------------------|
| <b>Frequency:</b>         | 820-970 MHz          |
| <b>Max Gain:</b>          | 8dBi                 |
| <b>Radiation Pattern:</b> | Uni-Directional      |
| <b>MIMO:</b>              | SISO                 |
| <b>Size (LxWxD):</b>      | 250mm x 250mm x 40mm |

## PUCK-1



Available in White



**Primary Industry:** Transport & Mobility; Marine & Coastal; Commercial & Industrial; Mining & Tunnelling; IoT, M2M & Smart Meters; Farming & Agricultural

|                           |                                   |
|---------------------------|-----------------------------------|
| <b>Frequency:</b>         | 698-960; 1710-2700; 3200-3800 MHz |
| <b>Max Gain:</b>          | 6dBi                              |
| <b>Radiation Pattern:</b> | Omni-Directional                  |
| <b>MIMO:</b>              | SISO                              |
| <b>Size (LxWxD):</b>      | Ø99.3mm x 36mm                    |

## PUCK-2



Available in White



**Primary Industry:** Transport & Mobility; Marine & Coastal; Commercial & Industrial; Mining & Tunnelling; IoT, M2M & Smart Meters; Farming & Agricultural

|                           |                                    |
|---------------------------|------------------------------------|
| <b>Frequency:</b>         | 698-960; 1710-2700; 3200-3800 MHz  |
| <b>Max Gain:</b>          | 6dBi                               |
| <b>Radiation Pattern:</b> | Omni-Directional                   |
| <b>MIMO:</b>              | 2X2 MIMO - 2-in-1 Antenna: 2 x LTE |
| <b>Size (LxWxD):</b>      | Ø99.3mm x 36mm                     |

## PUCK-4



**Primary Industry:** Transport & Mobility; Marine & Coastal; Commercial & Industrial; Mining & Tunnelling; IoT, M2M & Smart Meters; Farming & Agricultural

|                           |   |
|---------------------------|---|
| <b>Frequency:</b>         | 698-960; 1710-2700; 3200-3800 MHz           |
| <b>Max Gain:</b>          | 6dBi  |
| <b>Radiation Pattern:</b> | Omni-Directional                            |
| <b>MIMO:</b>              | 2X2 MIMO - 3-in-1 Antenna: 2 x LTE, 1 x GPS |
| <b>Size (LxWxD):</b>      | Ø99.3mm x 36mm                              |

## PUCK-5



Available in White



**Primary Industry:** Transport & Mobility; Marine & Coastal; Commercial & Industrial; Mining & Tunnelling; IoT, M2M & Smart Meters; Farming & Agricultural

|                           |  |
|---------------------------|--|
| <b>Frequency:</b>         | 698-960; 1710-2700; 3200-3800; 5000-6000 MHz           |
| <b>Max Gain:</b>          | 7.5dBi   |
| <b>Radiation Pattern:</b> | Omni-Directional                                       |
| <b>MIMO:</b>              | 2X2 MIMO - 5-in-1 Antenna: 2 x LTE, 2 x Wi-Fi, 1 x GPS |
| <b>Size (LxWxD):</b>      | Ø99.3mm x 36mm   |

## PUCK-12



Available in White



**Primary Industry:** Transport & Mobility; Marine & Coastal; Commercial & Industrial; Mining & Tunnelling; IoT, M2M & Smart Meters; Farming & Agricultural

|                           |                                      |
|---------------------------|--------------------------------------|
| <b>Frequency:</b>         | 2400-2500; 5000-6000 MHz             |
| <b>Max Gain:</b>          | 7.5dBi Wi-Fi                         |
| <b>Radiation Pattern:</b> | Omni-Directional                     |
| <b>MIMO:</b>              | 2X2 MIMO - 2-in-1 Antenna: 2 x Wi-Fi |
| <b>Size (LxWxD):</b>      | Ø99.3mm x 36mm                       |

## PUCK-7



**Primary Industry:** Transport & Mobility; Marine & Coastal; Commercial & Industrial; Mining & Tunnelling; IoT, M2M & Smart Meters; Farming & Agricultural

|                           |   |
|---------------------------|---|
| <b>Frequency:</b>         | 698-960; 1710-2700; 3200-3800; 5000-6000 MHz  |
| <b>Max Gain:</b>          | 7.5dBi  |
| <b>Radiation Pattern:</b> | Omni-Directional                              |
| <b>MIMO:</b>              | 2X2 MIMO - 4-in-1 Antenna: 2 x LTE, 2 x Wi-Fi |
| <b>Size (LxWxD):</b>      | Ø99.3mm x 36mm                                |

## SPLT-16



**Primary Industry:** Mining & Tunnelling, Commercial & Industrial, Farming & Agricultural, Urban & Rural

|                        |  |
|------------------------|--|
| <b>Frequency:</b>      | 410 - 7200 MHz   |
| <b>Isolation:</b>      | -10db  |
| <b>Insertion Loss:</b> | -1db   |
| <b>MIMO:</b>           | 2X2 MIMO   |
| <b>Size (LxWxD):</b>   | 158mm x 96mm x 40mm (Excluding cables, connectors and adhesive foam) |

## PUCK-8



**Primary Industry:** Transport & Mobility; Marine & Coastal; Commercial & Industrial; Mining & Tunnelling; IoT, M2M & Smart Meters; Farming & Agricultural

|                           |   |
|---------------------------|---|
| <b>Frequency:</b>         | 698-960; 1710-2700; 3200-3800; 5000-6000 MHz  |
| <b>Max Gain:</b>          | 7.5dBi  |
| <b>Radiation Pattern:</b> | Omni-Directional                              |
| <b>MIMO:</b>              | 2X2 MIMO - 3-in-1 Antenna: 2 x LTE, 1 x Wi-Fi |
| <b>Size (LxWxD):</b>      | Ø99.3mm x 36mm                                |

## WLAN-60



**Primary Industry:** Commercial & Industrial

**Secondary Industry:** Marine & Coastal; Mining & Tunnelling; IoT, M2M & Smart Meters; Farming & Agricultural

|                           |                                     |
|---------------------------|-------------------------------------|
| <b>Frequency:</b>         | 2400-2500; 3300-3800; 5000-6000 MHz |
| <b>Max Gain:</b>          | 18dBi                               |
| <b>Radiation Pattern:</b> | Uni-Directional                     |
| <b>MIMO:</b>              | SISO                                |
| <b>Size (LxWxD):</b>      | 240mm x 240mm x 60mm                |

## WLAN-61



**Primary Industry:** Commercial & Industrial

**Secondary Industry:** Marine & Coastal; Mining & Tunnelling; IoT, M2M & Smart Meters; Farming & Agricultural

|                           |                          |
|---------------------------|--------------------------|
| <b>Frequency:</b>         | 2400-2500; 5000-6000 MHz |
| <b>Max Gain:</b>          | 11dBi                    |
| <b>Radiation Pattern:</b> | Uni-Directional          |
| <b>MIMO:</b>              | 4X4 MIMO                 |
| <b>Size (LxWxD):</b>      | 240mm x 240mm x 60mm     |

## XPOL-1-5G



**Primary Industry:** Commercial & Industrial

**Secondary Industry:** Mining & Tunnelling; IoT, M2M & Smart Meters

|                           |   |
|---------------------------|---|
| <b>Frequency:</b>         | 617-960; 1710-2700; 3400-3800 MHz (Band 71 - US Specific) |
| <b>Max Gain:</b>          | 3dBi  |
| <b>Radiation Pattern:</b> | Omni-Directional  |
| <b>MIMO:</b>              | 2X2 MIMO or 4X4 MIMO                                      |
| <b>Size (LxWxD):</b>      | 247mm x 157mm x 88mm                                      |

## XPOL-2-5G



**Primary Industry:** Commercial & Industrial; Urban & Rural

**Secondary Industry:** Mining & Tunnelling; IoT, M2M & Smart Meters; Farming & Agricultural

|                           |                                      |
|---------------------------|--------------------------------------|
| <b>Frequency:</b>         | 617-960; 1710-4200 MHz               |
| <b>Max Gain:</b>          | 11dBi                                |
| <b>Radiation Pattern:</b> | Uni-Directional                      |
| <b>MIMO:</b>              | 2X2 MIMO                             |
| <b>Size (LxWxD):</b>      | 290mm x 265mm x 155mm (With Bracket) |

## XPOL-6



**Primary Industry:** Commercial & Industrial; Urban & Rural

**Secondary Industry:** Mining & Tunnelling; IoT, M2M & Smart Meters; Farming & Agricultural

|                           |  |
|---------------------------|--|
| <b>Frequency:</b>         | 698-960; 1710-2700; 3200-3800; 5000-6000 MHz           |
| <b>Max Gain:</b>          | 7.5dBi   |
| <b>Radiation Pattern:</b> | Omni-Directional                                       |
| <b>MIMO:</b>              | 2X2 MIMO - 5-in-1 Antenna: 2 x LTE, 2 x Wi-Fi, 1 x GPS |
| <b>Size (LxWxD):</b>      | Ø99.3mm x 36mm   |

## XPOL-16



**Primary Industry:** Commercial & Industrial; Urban & Rural

**Secondary Industry:** Mining & Tunnelling; IoT, M2M & Smart Meters; Farming & Agricultural

|                           |                                 |
|---------------------------|---------------------------------|
| <b>Frequency:</b>         | 450-470; 790-860; 1710-2170 MHz |
| <b>Max Gain:</b>          | 8dBi                            |
| <b>Radiation Pattern:</b> | Uni-Directional                 |
| <b>MIMO:</b>              | 2X2 MIMO                        |
| <b>Size (LxWxD):</b>      | 360mm x 360mm x 155mm           |

## XPOL-24



**Primary Industry:** Commercial & Industrial; Urban & Rural

**Secondary Industry:** Mining & Tunnelling; IoT, M2M & Smart Meters; Farming & Agricultural

|                           |                                       |
|---------------------------|---------------------------------------|
| <b>Frequency:</b>         | 617-960; 1710-2700; 3400-4200 MHz     |
| <b>Max Gain:</b>          | 11dBi                                 |
| <b>Radiation Pattern:</b> | Uni-Directional                       |
| <b>MIMO:</b>              | 4X4 MIMO                              |
| <b>Size (LxWxD):</b>      | 444mm x 290mm x 110mm (excl. bracket) |



## WAVEHUNTER



**Primary Industry:** Marine & Coastal

|                           |   |
|---------------------------|---|
| <b>Frequency:</b>         | 617-960; 1710-2700; 3400-4200 MHz (Band 71 - US Specific) |
| <b>Max Gain:</b>          | 11dBi   |
| <b>Radiation Pattern:</b> | Multi-Directional   |
| <b>MIMO:</b>              | 6x (4X4 MIMO)   |
| <b>Size (LxWxD):</b>      | 650mm x 650mm x 893mm                                     |

## RIPPLE



**Primary Industry:** Marine & Coastal

|                              |   |
|------------------------------|---|
| <b>Frequency:</b>            | 617-960 MHz; 1710-2700 MHz; 3400-7200 MHz |
| <b>Max Gain:</b>             | 9.5dBi                                    |
| <b>Radiation Pattern:</b>    | Omni-Directional                          |
| <b>MIMO:</b>                 | 8x8 or 16x16 MIMO                         |
| <b>Size (LxWxD):</b>         | 496mm x Ø410mm                            |
| <b>Router Space (LxWxD):</b> | 300mm x 250mm x 110mm                     |

## DPLX-2



**Primary Industry:** Marine & Coastal; Mining & Tunnelling, Farming & Agricultural, Urban & Rural

|                        |                          |
|------------------------|--------------------------|
| <b>Frequency:</b>      | 2400-2500; 5000-6000 MHz |
| <b>Insertion loss:</b> | -1.7dB                   |
| <b>Isolation:</b>      | 25dB                     |
| <b>MIMO:</b>           | 2X2 MIMO                 |
| <b>Size (LxWxD):</b>   | 171mm x 132mm x 39mm     |









## International/South Africa

### Johannesburg

Unit 4, N1 Industrial Park, Landmarks Ave  
Samrand, 0157, South Africa

T: +27 12 657 0050

#### *International Sales:*

sales-global@poynting.tech

#### *General Enquiries:*

info@poynting.tech

## Europe

### Germany

Regus Business Center Neue Messe Riem,  
Kronstadter Straße 4, 81677 München, Germany

#### *Customer Service:*

+49 89 7453 9002

#### *General Enquiries:*

sales-europe@poynting.tech

## USA

### Poynting Inc

1804 Owen Court, Suite 104, Mansfield,  
TX 76063, Texas, USA

#### *Customer Service:*

+1 817 533-8130

#### *General Enquiries:*

sales-us@poynting.tech

## Poynting Marketing

T: +27 12 657 0050

E: marketing@poynting.tech

[www.poynting.tech](http://www.poynting.tech)