

DAP145



DAP145 360° VIEW

INDUSTRIAL WIRELESS ACCESS POINT WITH

The DAP145 is an industrial Wi-Fi access point with RS485 communication engineered for utilities, machine builders, and system integrators. It enables connecting wired industrial devices to modern IP networks without extensive cabling. The device functions as an access point or client (STA/Mesh/Fast roaming) and provides direct serial-to-IP bridging via its native RS485 port. Advanced RutOS tools like Data to Server and industrial protocol support facilitate secure data collection to the cloud, all managed remotely via the RMS platform.



WI-FI AND RS485 BRIDGING

Bridge RS-485 devices to IP with Serial-over-IP and Modbus

FLEXIBLE WI-FI MODES

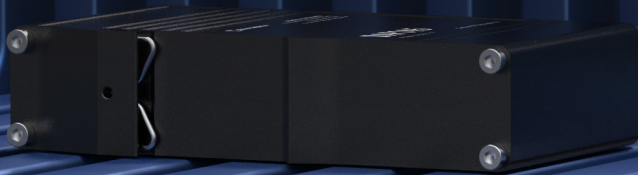
Mesh, STA, and Fast Roaming for coverage extension, backhaul, and industrial asset mobility

CLOUD-READY DATA COLLECTION

Collect and convert industrial data with Data to Server tool and native protocol support

DESIGNED FOR INDUSTRY

Narrow footprint with integrated DIN rail mounting and top-entry terminal block power



RMS COMPATIBLE WITH DAP145

REMOTE
MANAGEMENT
SYSTEM

MANAGEMENT

ALERTS

CONFIGURATION

ACCESS

FOTA

KEY FEATURES

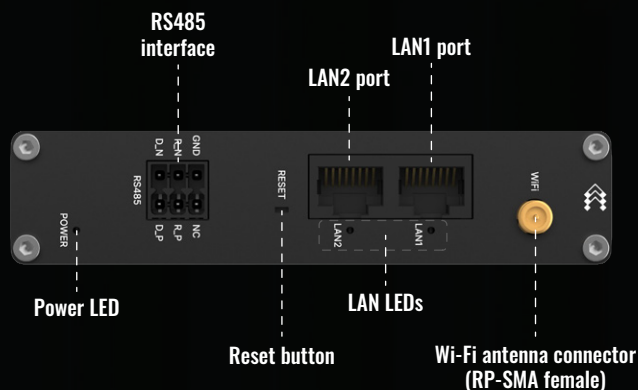
HARDWARE

CPU	Mediatek, 580 MHz, MIPS 24KEc
RAM	128 MB, DDR2
Storage	16 MB, NOR Flash
Powering options	3-pin industrial DC power socket, 9 - 30 VDC
Antenna connectors	1 x RP-SMA for Wi-Fi
Ethernet	2 x RJ45 ports, 10/100 Mbps: 2 x LAN
Wi-Fi	IEEE 802.11b/g/n, Access Point (AP), Station (STA)
Serial	RS485
Grounding	1 x Grounding screw
Status LEDs	2 x LAN type LED, 1 x Power LED
Operating temperature	-40 °C to 75 °C
Housing	Aluminium housing
Dimensions (W x H x D)	113.10 x 25 x 68.6 mm
Weight	149.2 g

SOFTWARE

Operating system	RutOS (OpenWrt based Linux OS)
Wireless features	Wi-Fi security, SSID/ESSID, Wi-Fi users, Wireless Connectivity Features, Wireless MAC filter, Wireless QR code generator, TravelMate
Network features	Routing, Network protocols, VoIP passthrough support, Connection monitoring, Firewall, Firewall status page, Port management, Network topology, DHCP, QoS / Smart Queue Management (SQM), DNS over HTTPS, DDNS, Network backup, Load balancing, Hotspot, Hotspot 2.0, SSHFS, VRF support, Traffic Management, IGMP Proxy
Security	Authentication, Firewall, Attack prevention, VLAN, WEB filter, Access control, Certificate Manager, 802.1x
VPN and tunneling	VPN, OpenVPN, OpenVPN Encryption, IPsec, GRE, PPTP, L2TP, Stunnel, DMVPN, SSTP, ZeroTier, WireGuard, Tinc, EoIP
Monitoring and Management	WEB UI, FOTA, SSH, Email, TR-069, MQTT, SNMP, JSON-RPC, RMS
Cloud solutions	RMS, ThingWorx, Cumulocity - Cloud of Things, Azure IoT Hub, AWS IoT Core
Services	BacNET, OPC UA, Modbus, Data to Server, Modbus MQTT GATEWAY, DNP3, DLMS/COSEM, API

FRONT VIEW



BACK VIEW

