

Great Hammerhead™

Product features

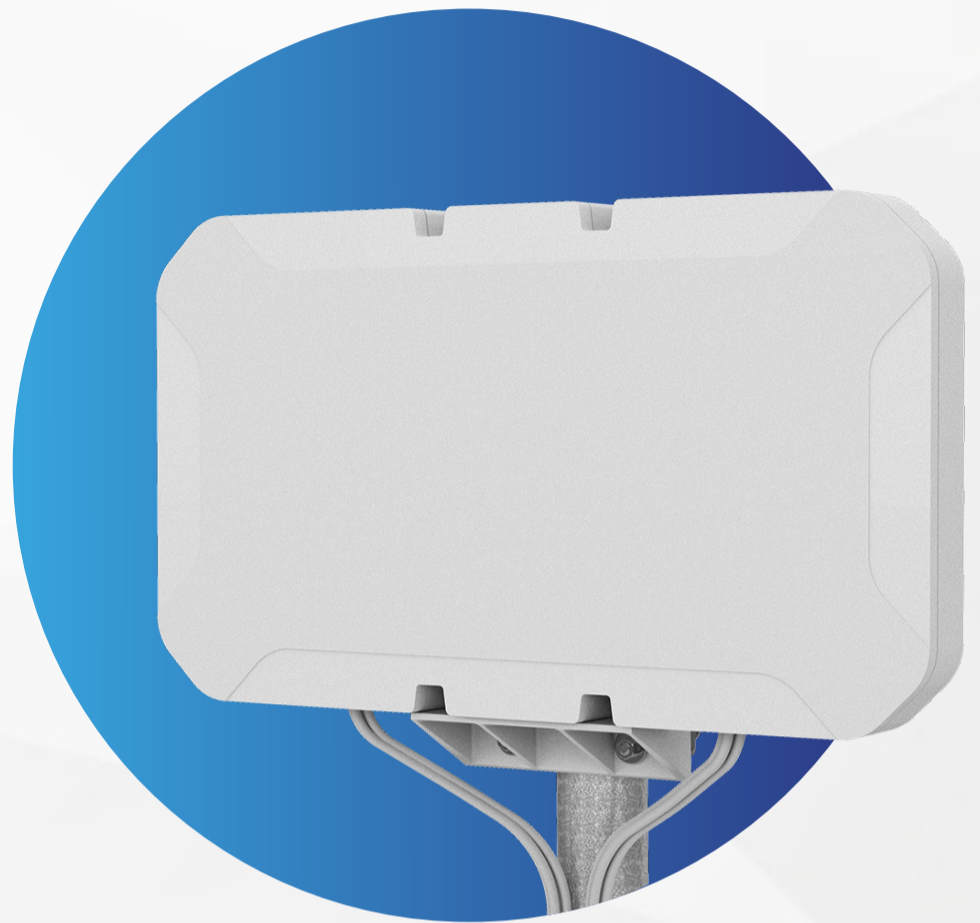
The Great Hammerhead™ is a high-performance 2x 4x4 (DWMM8) or 3x 2x2 (DWMM6) MiMo antenna solution designed for professional use in fixed site applications with compatible devices. The antenna is a single solution for these advanced CAT18/20 routers where all the functions are catered for by one product and so the user does not have to consider compatibility, spacing and installation or multiple antennas. The Great Hammerhead™ range is an ideal product for applications where performance is an important factor but where the installation site is not remote enough to require an antenna solution with high directional gain.

Customer benefits

- Supports dual 4x4 modems or 3x 2x2 modems regardless of location or network operator.
- When properly installed the product offers faster upload and download speeds and a robust connection even in low coverage areas.
- The antenna doesn't require directional alignment making installation easier.
- Multiple installation options offer flexibility and more options for the installer and user as to how and where they install the product.
- The optional GPS/GNSS ensures consistent, reliable and accurate location data.
- The product won't be damaged or degraded by UV or rainfall and will continue to perform over the long term even when installed outdoors.
- The antenna can be supplied as a complete kit ready to install. The cables are resistant to fire and are suitable for many types of fixed site installation.

Performance features

- 2x (4x4) or 3x (2x2) MiMo fixed site
- Covers wideband 617-960/1427-6000MHz
- Optional L1 or L1/L5 GPS/GNSS
- Integrated double shielded FR CS32 cable
- IP66 rated enclosure


**IP66
RATED**


Key applications

- Fixed site
- Failover
- Enterprise
- Dual modem/cellular bonding

Available accessories

Coaxial surge arrestors

SAMS-SP-SMABJ

SAMS-NP-NBJ



Extension cables

CS240: Ideal for up to 15m (50') various connectors available



CS400: Ideal for runs over 15m (50') various connectors available



Great Hammerhead™

Product dimensions

Length: 442mm/17.4"

Depth: 48mm/1.9"

Height: 262mm/10.3"

Base antenna part numbers

Part no.	Configuration	MiMo 4G/5G	GPS/ GNSS	Cables & Connectors
DWMM8-6-60-5SP	8-IN-1	2x (4x4)		5m (16.4') SMA (m)
DWMM8G-6-60-5SP	9-IN-1	2x (4x4)	L1	5m (16.4') SMA (m)
DWMM85G-6-60-5SP	9-IN-1	2x (4x4)	L1/L5	5m (16.4') SMA (m)
DWMM85G-6-60-05NJ	9-IN-1	2x (4x4)	L1/L5	0.5m (1.5') N (f)
DWMM8G-6-60-05NJ	9-IN-1	2x (4x4)	L1	0.5m (1.5') N (f)
DWMM8-6-60-05NJ	8-IN-1	2x (4x4)		0.5m (1.5') N (f)
DWMM6-6-60-5SP	6-IN-1	3x (2x2)		5m (16.4') SMA (m)
DWMM65G-6-60-5SP	7-IN-1	3x (2x2)	L1/L5	5m (16.4') SMA (m)

Router compatibility

Part no.	Manufacturer	Model
DWMM8[X]-6-60	Ericsson Cradlepoint	E3000 Dual Modem
	Ericsson Cradlepoint	E300 Dual Modem
	Ericsson Cradlepoint	IBR1700 Dual Modem
	Ericsson Cradlepoint	R1900 Dual Modem
	Ericsson Cradlepoint	R920 Dual Modem
	Semtech/Sierra Wireless	XR80
	Peplink	MAX BR 2 Pro
	Peplink	MAX HD4
	Teltonika	RUTM52
DWMM6[X]-6-60	Inseego	Wavemaker S2000
	Dejero	GateWay 3200
	Dejero	GateWay 211
	Dejero	GateWay M6E6

*This list is not exhaustive. Panorama Antennas claims no affiliation with, approval or endorsement by the device manufacturers listed. The customer remains responsible for ensuring compatibility of the product for their application. All trademarks remain property of their respective owners.

MAKING THE CONNECTION