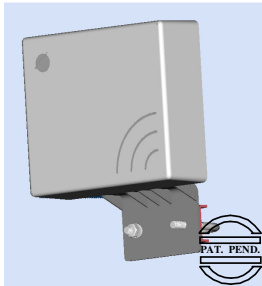




COMPACT DIRECTIONAL ANTENNA

RFID 13.56 MHz	ISM 433.92 MHz	GSM 880 + 960 MHz	GPS 1575.42 MHz	DCS 1710 + 1880 MHz	PCS 1850 + 2000 MHz	DECT 1880 + 1900 MHz	UMTS 1900 + 2170 MHz	W-LAN 2400 + 2483 MHz	W-LAN 5150 + 5725 MHz
----------------------	----------------------	-------------------------	-----------------------	---------------------------	---------------------------	----------------------------	----------------------------	-----------------------------	-----------------------------

General Description



The Compact Directional Antenna provides high-gain in the direction of the base station; its performance permits connection where the distance is significant with a low-impact design and very small dimension. It is projected for GSM Dual Band at 900 and 1800 MHz, DECT and 3rd generation devices.

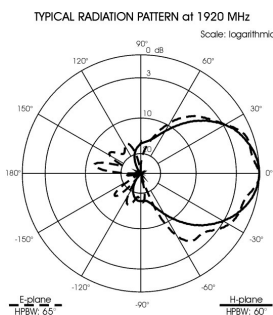
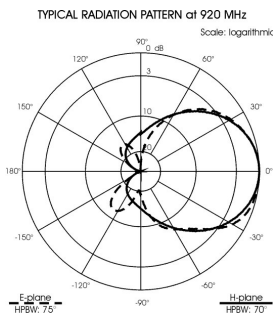
Electrical Data

Frequency range :	880-960 MHz 1710-2170MHz
Typology :	Directional antenna
Gain :	9 dBi
VSWR :	≤ 2 : 1
Polarization :	Vertical
Impedance :	50 Ω
Connector :	SMA-M (other on request)

Mechanical Data

Dimension (approximate) :	170 X 155 X 75 mm
Radom material :	Light grey ABS UV stabilized
Operating temperature :	- 40° ÷ +80°C
Installation type :	Mast : Ø 25-42 mm
Operating environment :	External

Radiation Patterns



Installation examples

